

Superior Performance Color Sorter Series, which can accurately remove off-color and mineral (such as glass)

OPTICAL SORTER SSM SERIES

SSM3001·5001 AMS/BM/DMS/AIS/BI/DIS

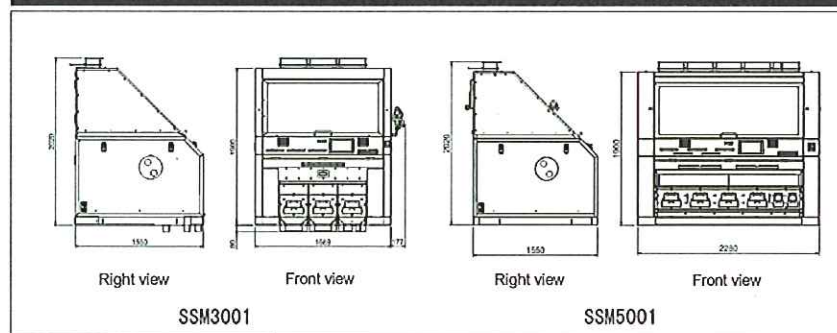


Specifications

MODEL	SSM3001						SSM5001						
	AMS	AIS	BM	BI	DMS	DIS	AMS	AIS	BM	BI	DMS	DIS	
Chute	Changeable collocation of the chutes depending on the requirements of the end-users.												
Capacity	White Rice	1.2~13.2	1.8~19.8	1.2~13.2	1.8~13.2	1.8~26.4	3.0~33	1.8~19.8					
	Brown Rice	1.2~6.6	1.8~9.9	1.2~6.6	1.8~13.2	3.0~16.5	1.8~9.9						
(t/h)	Wheat	1.2~6.6	1.8~9.9	1.2~6.6	1.8~13.2	3.0~16.5	1.8~9.9						
Main Purpose	1. Removing off-color from rice or brown rice 2. Removing the white belly from rice and brown rice 3. Simultaneously removing the off color and the white belly 4. Removing the off color from the wheat and barley 5. Removing the minerals (glass, white stone) from above materials * No. 5 only for AMS BM DMS types												
Number of Ejectors	252						420						
Nozzle Pitch	3.5mm												
Power supply (V)	One phase 200-240V						One phase 200-240V						
Power requirements (kW)	Normal	2.6	2.0	2.6	2.0	2.6	2.0	2.8	2.2	2.8	2.2	2.8	2.2
	Heater	3.5						5.4					
Air consumption	600~1500NL/min						1000~2000NL/min						
Volume of dust collector	12m ³ /min						15m ³ /min						
Power of air compressor	5.5~11.0kW						7.5~15.0kW						
Net weight	920kg						1400kg						
Dimensions	1669×1550×2020mm						2280×1550×2020mm						

- * Sorting performance varies depending on variety, condition of material, and initial contaminations.
- * The higher of the reject rate of incomings, the more compressed air consumption. Pay attention the volume of air compressor.
- * Excluding the conveyor, which supplied by the customers.
- * When the capacity of priority sorting is 0.6 tons/hr/chutes, changing the U type chutes.

Dimensions



Optical Sorter SSM

Accurately removing the off-color and Mineral (such as glass)

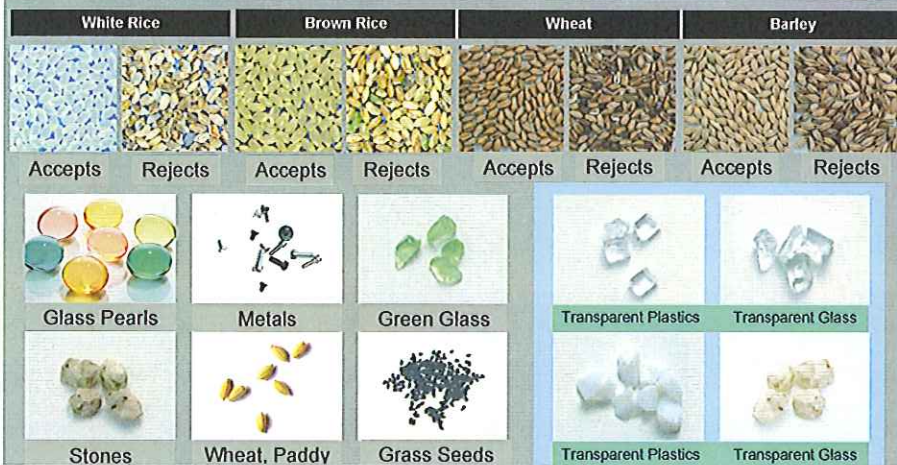
With improving standard of living continuously. The foreign material mixed in the foodstuffs is the focus of attention in food industry. And the consumers are concerned about this case increasingly.

As the leader of Rice milling and color sorting industries, Satake Corporation search after energetically, utilizing the latest advanced sorting technology, and develop superior Performance Color Sorter Series.

The sorter adopts high resolution CCD (visible) Camera with 2048 pixels, and NIR (Near infrared) Camera as options. The digital image processing techniques can accurately remove off-color and minerals (such as glass) from brown rice or rice. It is high-precision, high rate of finished products, high-performance sorters.



Sample of removing discolor and foreign materials (blue area sample is only for AMS type)



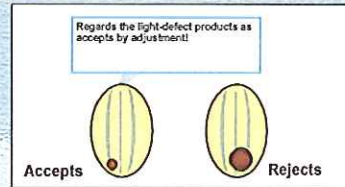
1. High-precision sorting



SSM sorter adopted high-precision CCD line-array camera, its pixels is 2048, and Pixel/measurement is 14um. Ensuring the resolving power increasingly. The rejects with tiny defect area or the defect in the side can be removed precisely.

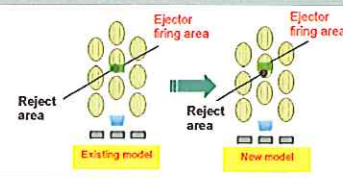
High-resolution ejectors with 3.5 mm of mouth match with late-model ejectors, ensuring the precision of ejectors up to top level.

2. High rate of finished productions



The customers can set the size of rejects by themselves, and the quality of the accept can be controlled. For example, defect area is bigger, it can be set as rejects. The defect area is smaller, it can be set as accepts or rejects by the customers. Meanwhile, there is the resort function to ensure the rate of accepts in the rejects lower.

3. Powerful image processing function



The SSM sorters have the powerful image processing function, No matter what is long grain rice or short grain rice; No matter where the defect area located. The computer can adjust the ejecting point to the geometrical center of rice, improving the sorting accuracy and reducing the rate of removing accepts.

4. High-precision image capturing function

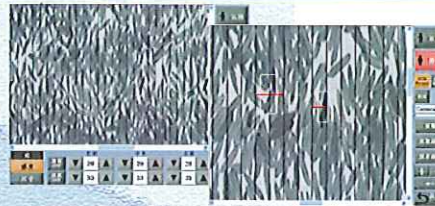
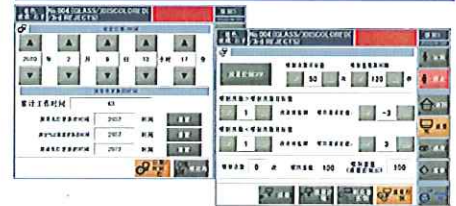


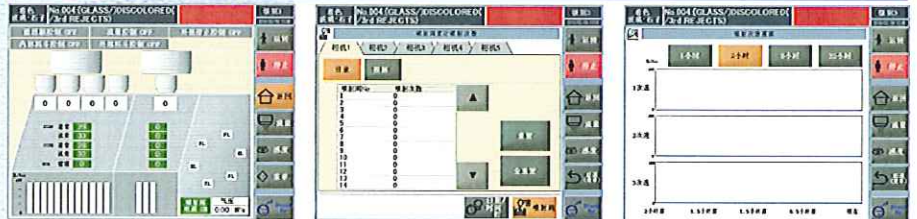
Image processing function can intercept the high resolution image, which can get the best parameter with the simulating setting.

5. Supermatic operating



Automatically adjusted flow rate depending on carrying capacity of ejection. Automatically starting the wiper system depending on how much dust at the glass surface of view. Automatically reminding if or not to change the wearing parts according to tracking the working condition of the wearing parts.

6. Flexibly human-computer interface



12.1 inch colored touch screen, communicating with LAN data, the operator can control the mechanism state of the sorter in the control room.
-Handling abnormal situation early
-Supervising instant situation, alarming when it is abnormal

-The accumulation times of the ejectors
The customers can check every ejector's working situation, and change it when its life time is over.

-The function of ejecting frequency
Showing the changing of ejector's frequency in order to understand the variety of the materials.



-100 settings can be registered
-It is very easy to recall and store the 100 setting data.

Storing 600 history recording, the operators can check the history recording to control the situations of the sorters.
-Alarming history
-Operating history

Automatically memorizing the alarming, easily to predominating the situation, and quickly resolving the problems.